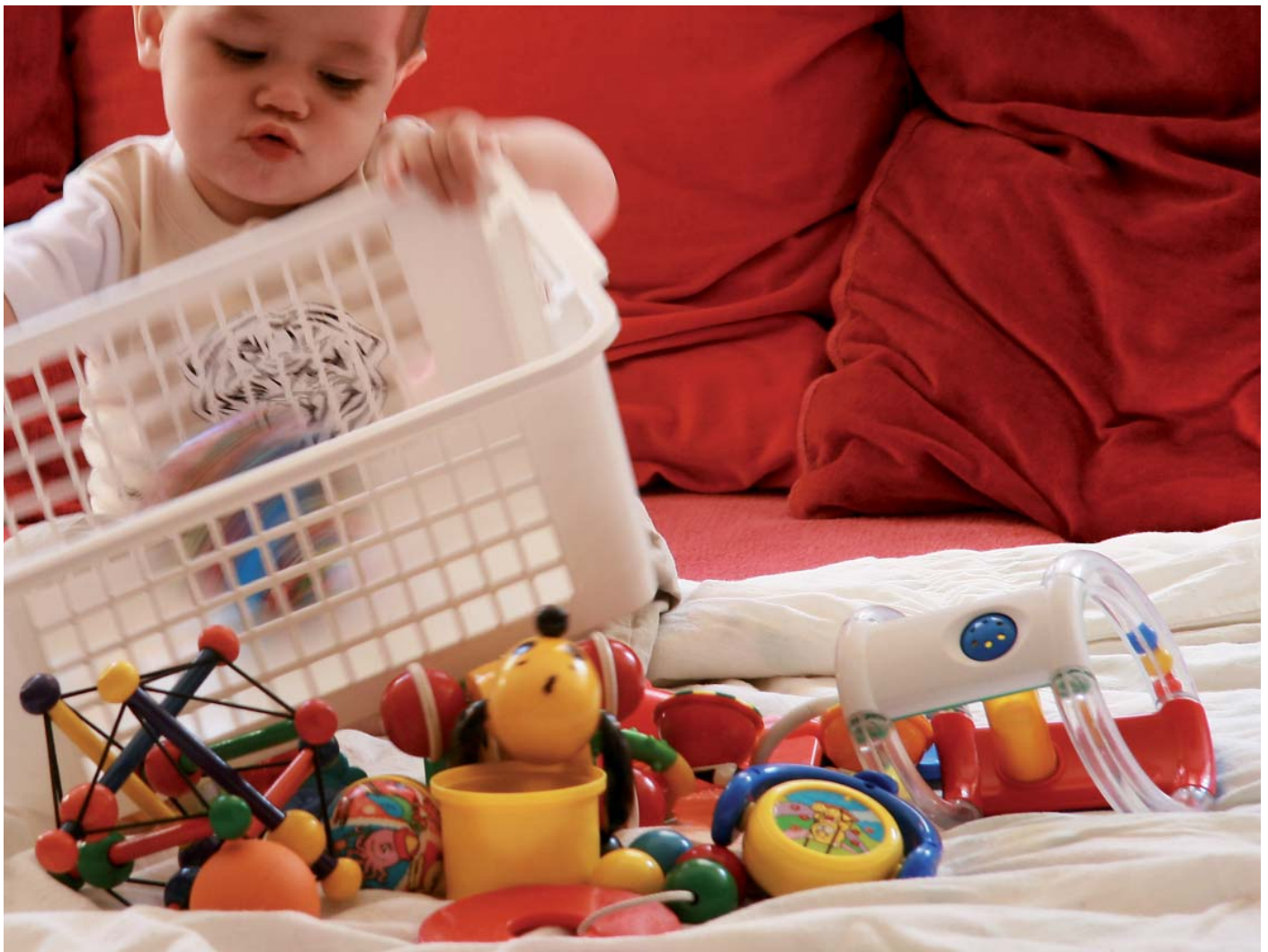


Welcome to the
Municipality of
Norrköping



➔ www.norrkoping.se



An organisation for the community

The Municipality of Norrköping employs over 9 000 staff and is the largest employer in Norrköping. Its activities are wide-ranging. Pre-schools and schools as well as elderly care and the care of people with disabilities comprise the fundamental operations. The library service, leisure activities, fire protection, town planning and social welfare also belong to the municipality's areas of responsibility.

The municipality is governed politically

The municipal legislative body is a politically governed organisation elected by proportional representation which decides on the goals, direction and quality of the community services provided.

The organisation consists of elected representatives in different governing bodies as well as public servants working within the municipality's various administrations.

The elected assembly makes decisions

The task of the elected representatives is to decide upon the direction and budget for the municipality's various operations. In turn, politicians in ten different committees commission the administrative bodies and departments to operate their activities within the budget framework. The committees also manage the purchasing of services from the

private sector should they be seen as favourable. Furthermore, the elected representatives are responsible for following up and evaluating these services to monitor that they fulfil the required criteria.

In the Municipality of Norrköping we carry out about 450 different commissioned assignments.

The public service carries out assignments

The public service working within the municipal administration and departments have the task of implementing the decisions of the elected representatives. One of the roles of the public servants is to hammer out the basic data to support political decisions.

The municipal services we provide to our residents are run from around 200 units: schools, pre-schools, libraries, residential care and youth recreation centres to mention but a few.



The political leadership

The municipality's political organisation consists of the Municipal Council and the Municipal Executive Board and committees.

The Municipal Council

The Municipal Council comprises 85 members and is the supreme decision-making body, in other words the municipality's local parliament. The council lays down the general principles for municipal activities and decides on issues that involve the direction of municipal operations.

The Municipal Council also decides on a municipal budget and the economic framework for the activities of each committee.

It is here that the amount of municipal tax for the residents of Norrköping is decided and how the budget shall be divided amongst the different municipal operations.

Democracy Planning Committee

The Municipal Council has elected a Democracy Planning Committee in which all the parties present in the Municipal Council are represented.

The task of the committee is to take the first step toward different measures which contribute to strengthening the influence of Norrköping's residents and developing local democracy.

Project Drafting Committee

In order to produce the Municipal Council's programme, project drafting committees are established.

Municipal Audit

The Norrköping Municipal Audit is commissioned by the Municipal Council to audit all municipal undertakings in Norrköping. The elected representative auditors are directly responsible for implementing the decisions made by the Municipal Council and that those responsible have the best interests of the residents of Norrköping at heart.

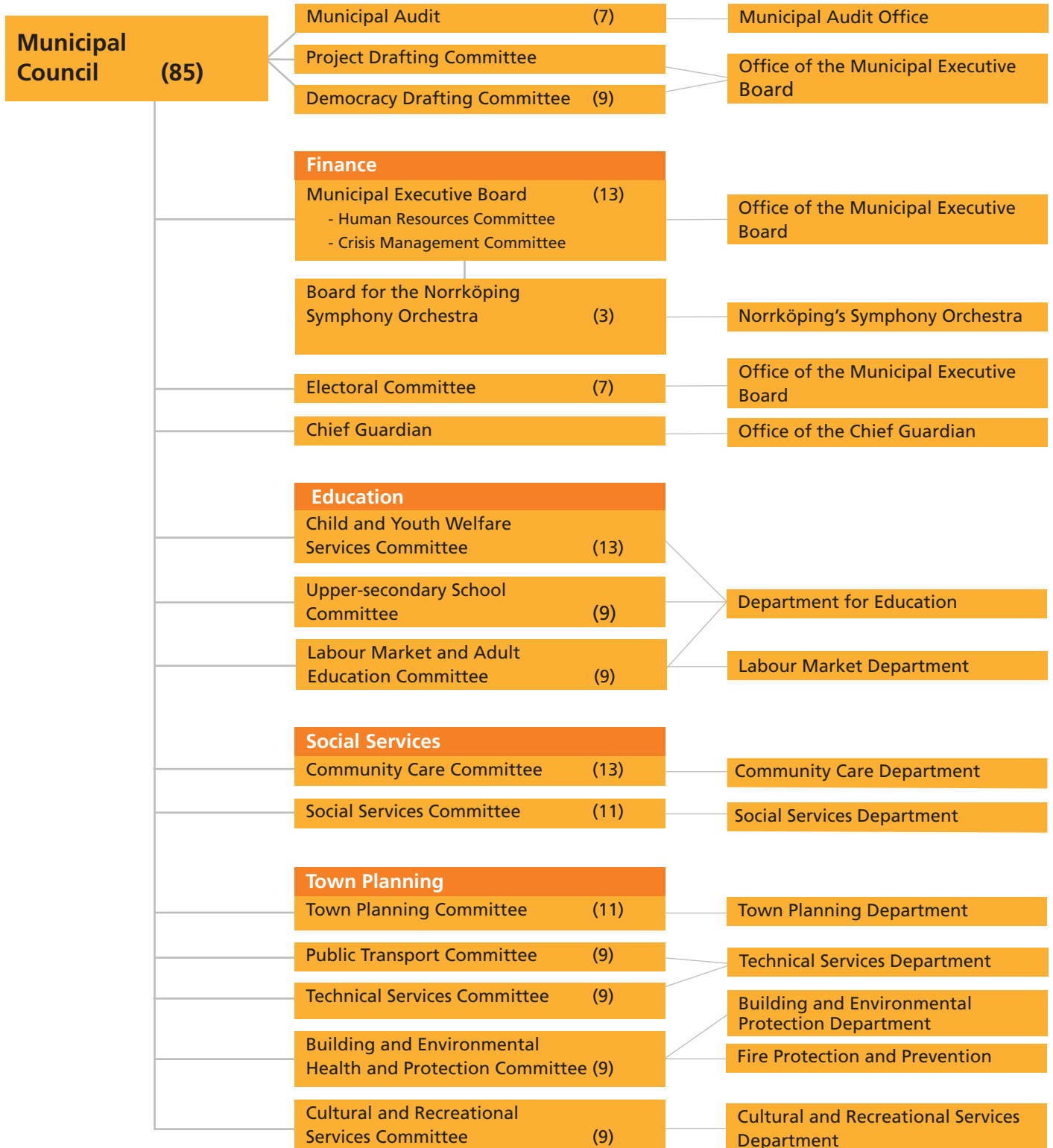
The Municipal Executive Board

The Municipal Executive Board is the council's leading political administrative body – the municipality's 'government'. It leads and coordinates the planning and monitoring of the municipality's finances, economy and operations.

Norrköping's Municipal Organisation

Elected representatives

Public Service



This is how municipal taxes are utilised:

100 SEK of municipal tax is utilised in the following way:

21 SEK	Compulsory schooling
19 SEK	Elderly care
11 SEK	Care of people with mental/physical disabilities
11 SEK	Pre-schools and care for school-aged children
10 SEK	Individual and family welfare
9 SEK	Upper-secondary schools
6 SEK	Infrastructure and protection
6 SEK	Culture and leisure
3 SEK	Business operations e.g. public transport
2 SEK	Adult education
1 SEK	Labour market measures
1 SEK	Political operations



The Municipal Executive Board's Human Resources Committee

Through the Human Resources Committee, the Municipal Executive Board acts as a recruitment authority for all municipal personnel except the Municipal Audit Office. The committee is responsible for employer questions, staff policy, negotiations, working environment, equality, and manager recruitment amongst others.

The Municipal Executive Board's Crisis Management Committee

The Municipal Executive Board's tasks as the Crisis Management Committee are performed during extraordinary events in peacetime by the Crisis Management Drafting Committee.

Municipal Commissioners and Opposition Leaders

Municipal Commissioners and Opposition Leaders are either full or part-time politicians. Other elected representatives carry out their political duties alongside standard employment. As well as the chairperson of the Municipal Executive Board, there are four other Municipal Commissioners with different areas of responsibility. Five leaders of the opposition guarantee the political opposition's insight and favourable conditions for a working dialogue. In addition there are numerous political secretaries.

Committees assign tasks

Ten different committees take on the political responsibility for the residents of Norrköping within various areas. The committees in turn, assign tasks and funds to municipal departments or outsource services to the private sector.

The committees are also responsible for monitoring and evaluating the operational and financial objectives.

Although the committees receive support and assistance from the municipal administration, they do not hold employer function nor personnel accountability, since the Municipal Executive

Board and its Human Resources Committee fulfil the function of a recruiting authority.

Political coordination

The political committee organisation is clearly divided into different operational areas. In order to facilitate ease of cooperation for closely connected operations, the committees are divided into four areas: finance, education, social welfare and town planning.

In that way, a coordinated responsibility is created for the committee chairpersons who share similar operational areas.

The chairpersons or presiding executives of the related committees meet regularly under the guidance of a municipal commissioner. It is here that common interests are discussed and a course of action decided.

Municipal services

Municipal services include child welfare, community care, education and cultural and leisure services. The municipality is also responsible for newly-arrived refugees. The municipality's general plan stipulates where different industrial premises, housing estates and retail areas can be established.

The Municipality also decides on planning permission, performs public health inspections and grants alcohol licences. In addition, it pays out income support, decides on the care of minors according to the Social Services Act and offers family counselling services to those in need.

The political committees decide on the most relevant course of action by assigning projects to the municipal administration or alternatively outsourcing them to the private sector.

The municipal departments run their operations independently according to the action plan and economic parameters that have been set out by the committees. Within the areas of education and community care the municipal departments are organised into local offices which share responsibilities and provide support for their respective departments in economic and personnel issues.



The Industrial Landscape

Norrköping's industrial landscape positioned on the serpentine Motala River, is unique in Europe. It stretches along the river from the rejuvenated Drags and Gryts factories to the west down to old Tuppen's land where the positively palatial town hall is located. The area is dominated by the river's gushing waters and magnificent industrial buildings. Most of the buildings were erected between 1850 and 1920 but Motala River's rapids and waterfalls have in fact been exploited since the Middle Ages. Thousands of people worked in the factories spinning and weaving wool and cotton. Different kinds of cloths and fabrics such as worsted yarn, cheviot and tweed were produced. Until 1870, Norrköping was a leader in the field of textiles, after which it fell victim to the turbulence of recession. By the 1950s the textile crisis was a fact and in 1970 Norrköping's last wool company was closed down.

At the beginning of the 1970s, the industrial landscape was a closed and derelict area. Instead of demolishing the structures and building new edifices in their place, the Municipality of Norrköping decided to preserve the area and together with local construction companies began to search for new injections of life and business for the age-old buildings.

Today you can stroll freely in an industrial landscape that has transformed into a hub for knowledge-based companies and the university contributing new dimensions to the Louis de Geer Concert Hall and Congress Center.

Norrköping's Symphony Orchestra

Norrköping's Symphony Orchestra, SON, was founded in 1912 and is one of the Sweden's foremost orchestras. Comprised of 85 musicians with Alan Buribayev as Principal Conductor, SON has a reputation of being one of the most exciting orchestras in Scandinavia. Through foreign tours and an extensive CD production, SON has developed an immense following and laudable respect on the international arena. In February 2008

SON was awarded a Gold Certification by the Swedish IFPI (International Federation of the Phonographic Industry) for its recording of Nordic Classical Favourites, with works by Grieg, Larsson, Nielsen, Nilsson and Sibelius, under the direction of Mats Rondin. In June, the world-leading music publication Gramophone reviewed SON's recording of John Pickard's *The Flight of Icarus*, *The Spindle of Necessity* and *Channel Firing*. The CD was then selected as Editor's Choice in June 2008. Since 1994 the Louis De Geer Concert & Congress Hall has been home once again to the orchestra where most of their concerts are held. Many concerts are also performed in Linköping. SON also tours prestigious festivals such as the Tonsättarfestivalen at the Stockholm Concert Hall.

Norrköping City Museum

Norrköping City Museum has a unique profile as a local history museum. It is located in the centre of Norrköping's industrial landscape with the task of highlighting the urban environment perspective and showing how business in the industrial landscape has transformed from handicrafts to industry and from paper and textile production to IT and knowledge sources.

Norrköping Art Museum

Norrköping Art Museum, located on Kristinaplatsen is home to one of the foremost collections of Swedish art and an international print collection which stretches from the 15th century to the present day.

The collection is perhaps most renowned in terms of Swedish modernism. Here you can find works by Carl Larsson and Karl Nordström together with modernism's pioneers Sigrid Hjertén, Isaac Grünewald, Vera Nilsson, Siri Derkert, Bror Hjorth and Gösta Adrian Nilsson. Lena Cronqvist, Cecilia Edefalk and Ulrik Samuelsson are a few of the contemporary artists. The temporary exhibitions reflect both historical and current developments on the contemporary art scene.



Norrköping's trade and industry 2009

Approx. 10 300 workplaces in Norrköping
 Approx. 9 000 companies in Norrköping
 57 900 jobs (2007)

Strong industries in Norrköping

Paper and packaging
 Logistics and transport
 Energy and environmental technology
 Visualisation
 Trade

Largest employers in Norrköping

(approx. number of employees, Jan 2009)

The Municipality of Norrköping.....	8 640
The County Council of Östergötland.....	2 800
Holmen AB.....	950
Billerud Skärblacka AB.....	650
E.ON.....	600
The Prison and Probation Administration.....	570
The Migration Board.....	500
LFV Group – Swedish Airports and Air Navigation Services.....	495
The Swedish Meteorological and Hydrological Institute.....	480
Linköping University.....	465
Servera R & S AB.....	450
Whirlpool Sweden AB.....	380
The Swedish Transport Agency.....	370

A trade and communication hub

Norrköping has a population of 128 000 and is, together with Linköping, an engine for growth in the Twin City Region. Trade and communications comprise the largest business sectors with regards to numbers of employees. Examples of other strong sectors are paper and packaging; environmental technology; and electronics.

Many government agencies are located in Norrköping: the Swedish Maritime Administration; the LFV Group – Swedish airports and Air Navigation Services; the Swedish Meteorological and Hydrological Institute; the Migration Board; and the Prison and Probation Administration. The newly launched Swedish Transport Agency was established in Norrköping in January 2009. Visualisation and energy and environmental technology are two investment-intensive areas for the region. The flagship of the progressive region, Norrköping Visualization Center-C will provide a space for education, research and public activities. Miljöteknikcentrum i Östergötland is the hub for development within energy and environmental technology.

Norrköping is located close to the Nordic region's logistics centres and the emerging markets of the Baltic region and is a dynamic and attractive part of Sweden with high growth ambitions. Norrköping has an international port, a well-developed infrastructure, nationally acclaimed education programmes in transport and logistics and a good supply of land.

The region is located in the Nordic triangle, Northern Europe's most important transport corridor, which in turn connects the Nordic big city regions. Half of the Swedish population resides within a 200 km radius.

Significant labour market

Norrköping has access to a large and skilled labour force. Thanks to a well-developed public transport and highway system, a number of towns are within easy commuting distance. Here you have direct access to a job market of 170 000 positions within a

maximum commuting distance of 50 minutes. Around 10,000 people commute between Norrköping and Linköping – a journey of 27 minutes by train and 30 minutes by car.

The planned high-speed railway, Ostlänken, will make it even easier to commute within the region and to Stockholm, reducing the journey time to under an hour. The construction of Ostlänken between Järna and Linköping is expected to start after 2015 according to the Swedish Rail Administration's revised plan.

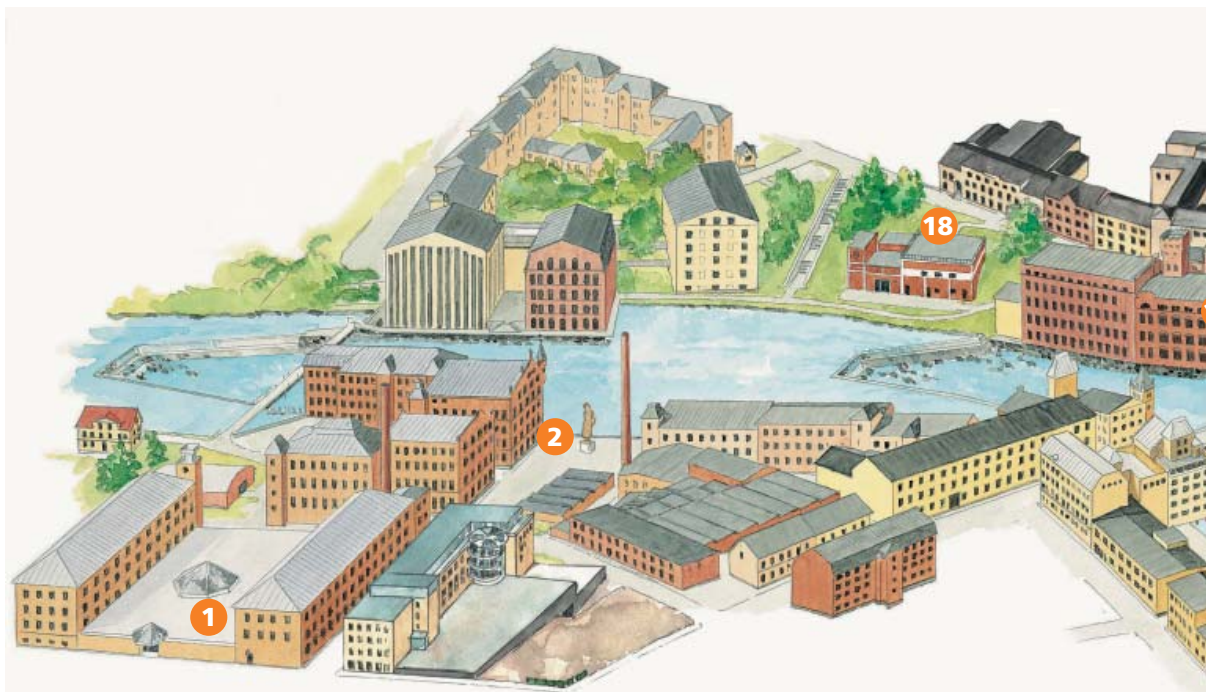
One of Sweden's most beautiful university campuses

Linköping University's campus (LiU) in Norrköping is one of Sweden's most stunning and expansive campuses. Unique cross-disciplinary programmes, cutting-edge research and regional collaboration characterise the university on the waterfront of the Motala River. In these splendid buildings of the industrial landscape, you will find around 5500 students and 460 employees. The most recent addition to the premises was built in 2008 creating a new entrance to Kåkenhus and the University Library from Skvallertorget.

Norrköping is an attractive and vibrant student town. All students attending Campus Norrköping LiU are guaranteed accommodation close to the university. The Campus Bus provides easy transportation between the Norrköping and Linköping campuses free of charge for all students.

Close cooperation between the university, the municipalities and trade and industry exists. One example of this is Norrköping Science Park which provides a platform for new business ideas and companies.

In and around LiU Norrköping world-class research and development is carried out within the areas of printed electronics, interactive services and visualisation. Thanks to the university's unique and specialised expertise, conditions for innovation and company establishment in Norrköping and the entire region are ideal.



1 – ProNova

ProNova is made up of a hundred or so companies combined together in what used to be the famous Tuppen spinning mill. The building also contains a hotel, a conference centre, training premises, a restaurant and a gym.

2 – Moa Martinson

Norrköping has honoured its own worker-writer with a powerful bronze sculpture by Peter Linde at Grytstorget.

3 – Arbetets museum (The Museum of Work)

At Laxholm can be found this unusual industrial building which had been a cotton factory boasting seven corners and which is known as Strykjärnet (the smoothing iron).

The Building has been described by Carl Milles as one of the most attractive industrial buildings in the country and which was built in a manner that utilises every metre of the little islet in the Strömmen river effectively. Strykjärnet houses the Labour Museum, which is a centre for exhibitions and research into work and its history.

4 – Strykbrädan (The Ironing Board)

Several of the university's departments can be found here together with the National Institute for Working Life. The Holmen's Museum is housed on the ground floor and still shows manual paper manufacturing on the same site as where the first paper-makers worked in the 17th century. The "Ironing Board" used to house the Laxholmen textile mill and the area used to have flour mills, a smith's hammer, a weapons factory and abundant salmon and eel fishing.

5 – Värmekyrkan (The heated church)

The old boiler centre is today a unique ceremonial arena with room for both entertainment and conferences. There is capacity for a good 1300 people in this stern industrial environment and in December four lights shine on the roof in one of the world's largest Advent candlesticks.

6 – "Flygel"

"Flygel" means "wing" or "grand piano" in Swedish and it was decided that it was appropriate to use the name for the latest addition to the Louis de Geer Concert & Congress Hall. The hall can seat 600 people and the multi-arena has a collapsible platform which can accommodate 1200 people standing, whether it is an entertainment or a business event.

7 – Illuminated waterfall

The waterfall at the Cotton Mill spreads light in different colours every half hour during the winter.

8 – The Holmen Tower

The Holmen Tower, in Norrköping yellow, is one of the entrances to the Industrial Landscape at Strömmen. The tower dates from the 1750s and is on the site where the Holmen factory worked since the early 17th century. The Tourist Office is sited here.

9 – The Louis de Geer Concert & Congress Hall

This one-time paper factory is today a unique concert and congress hall, and is the home venue of the Norrköping Symphony Orchestra. The hall has room for 1300 conference guests and restaurant capacity for 1100.

10 – Gamla Torget (The Old Market Place)

On the Old Market Place stands the Dutch financier Louis de Geer who came to Sweden in 1627 and who, as time went by, became the father of Swedish industrialism. Carl Milles created his statue and placed it in the heart of the mediaeval village which gradually turned into the town of Norrköping. The industrialist gazes down here at his factory - the Holmen Factory.

11 – The Knäppingsborg area and Swartzens House

Close to Järnbron bridge you can find the old residence of the affluent snus producer Swartz and his family. In the newly-renovated premises of the Empire House, the music association Crescendo is located and the whole neighbourhood of Knäppingsborg has developed into a unique and attractive environment. Here you can find restaurants, cafés and boutiques – all in a place that exudes life and creativity.



The Industrial Landscape

12 – Västgötebacken

The Västgötebacken hill is filling up today with information and knowledge companies. These line Västgötegatan which starts from Järnbron Bridge and is the only street in Norrköping still to retain its full mediaeval length in a town otherwise normally laid out in squares.

13 – Trappan - the Students' Union

The Student Union housed in Trappan - a rejuvenated textile factory - is the social hub for the students of LiU campus Norrköping. Trappan is a place for studies, breaks, dinners and other student events. Here you can also find the student unions' offices, reception, health clinic and much more. Here the academic world meets the surrounding town in an unusually enchanting environment.

14 – Stadsmuseet (The Town Museum)

The museum which tells of Norrköping's impressive textile era is naturally in the heart of the Industrial Landscape in a building which used to be a textile and dyeing mill. Food is available in the deep cellar vault and the cobbled courtyard is appealing in summer.

15 – The Skvallertorget Market Square

At Skvallertorget the industrial landscape meets up with modern Norrköping with its students and café life. The sculpture in the square is called the Banner of Unity and is by Pye Engström and in memory of the textile workers who used to gather here.

16 – Kåkenhus

The headquarters of Campus Norrköping is in Kåkenhus, and is part of Linköping University. The seven different buildings in Kåkenhus were built during the period from the late 19th century to the mid-20th century. They were first used for textile production and later for electronic manufacturing. NVIS is also found here: Norrköping's visualisation and Interaction Studio.

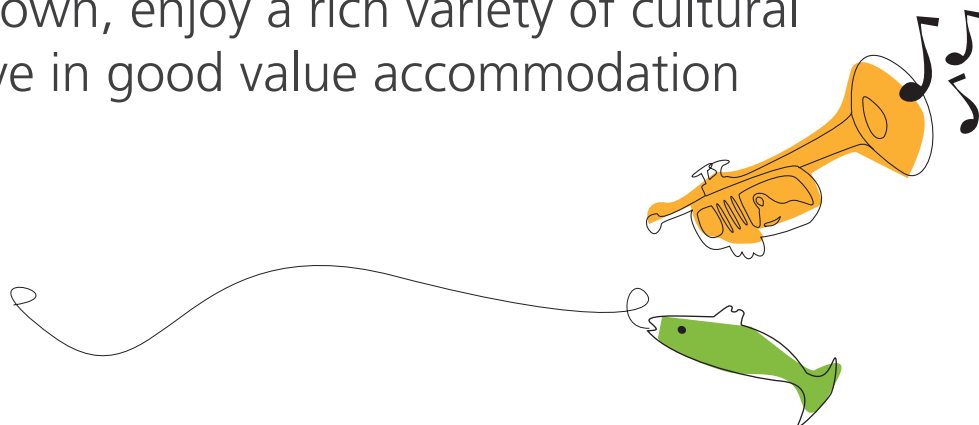
17 – Tappan (The Cabbage Patch)

Tappan is one of the buildings forming part of Campus Norrköping. The building houses the Department of Technology and Natural Science and also the research company Acreo, which has unique laboratory resources in electronics and optics.

18 – Arbis

Plays have been put on in master bricklayer Slättengren's house on Bredgatan since the late 19th century.

Here you can fish from the banks of the Motala River in the middle of town, enjoy a rich variety of cultural attractions and live in good value accommodation



The Twin City Region is an easy 2 hour drive southbound from Stockholm. This beautiful and development-intensive region is home to 420 000 residents.

In the region's biggest municipalities Norrköping and Linköping there are all the advantages of living in a metropolis: a sound infrastructure; plenty of interesting job opportunities and a rich music and culture scene. At the same time we avoid the big city problems of traffic jams, air pollution and lack of housing. We are one of the EU's strongest IT regions and a hub for aviation, communications technology, software development and electronics. The region is also home to Sweden's biggest and most prominent university – LiU as well as a significant number of multinational companies such as Alstom, E. ON, Ericsson, Motorola, Saab, Siemens and Whirlpool.

Housing

The region has a good housing market located in towns and places of natural beauty. The rich variety of big and small towns, suburbs and rural communities, provide many opportunities to choose an attractive home within easy commuting distance of a whole host of employers.

There are many competitively-priced alternatives to either buy or rent. Prices are about 50% cheaper than those in Stockholm and are very competitive on the international property market. The average price of a detached house in the Twin City Region is 1.6 million SEK.

Kommunikationer

The most important national highway and railway routes flow right through the region. Travel to Stockholm, Gothenburg and Copenhagen by train, car and plane is both fast and easy. The

train ride between Norrköping and Stockholm takes a mere 1 hour 15 minutes. Both Linköping and Norrköping have their own central airports where direct flights to Stockholm, Copenhagen, Amsterdam and Munich provide gateways to the rest of the world.

Together we are great

Linking Norrköping's and Linköping's work forces and housing markets means new jobs and increased development. According to Nutek's calculations a further 15 000 new jobs will be created by 2020. This is why the municipalities of Linköping and Norrköping are cooperating intensively to increase movement between the two towns, to create tighter building developments and take advantage of the towns' very different and complementary characters.

Nature, sport and leisure

Our region boasts everything from archipelagos to flat country, mountains and lakes. Here you can go fishing, sailing, canoeing and hunting. Two places of outstanding natural beauty are Lake Tåkern offering a unique European bird habitat and Omberg on the banks of Lake Vättern with its rich flora and fantastic views over the plains.

Kolmården Zoo and Safari Park is one of Europe's biggest and most beautiful wildlife reserves. For sports fans, the region offers the opportunity to practice and experience football, ice-hockey, basketball and golf. The region is proud of elite teams within many sports. Here you can also find good fishing waters – in Norrköping you can even fish in the river in the middle of town.



Would you like to know more about the services we provide?



A municipal service declaration tells you what you can expect from each of the municipal service-providers. You can find out about what you can expect from, for example, transportation services for the elderly and people with disabilities, adult education or waste management.

You can find the municipal service declarations in special brochures and on the municipality's website. You can pick up a brochure at the City Library, at the Town Hall reception and at the reception of the civic centres in the Rosen building.



Compliments, comments and complaints

Your views and comments about the municipal services we offer are very welcome. You can use the counterfoil in the brochures or go to the website www.norrkoping.se. You can also ring the switchboard. Your views are important and are used to develop and improve the quality of the municipal services we provide.



NORRKÖPING